

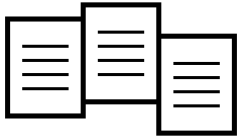


# PowerDirector 365

Photo Editing, Now With Generative AI



Create breathtaking compositions and artistic masterpieces with powerful AI tools, eye-catching visual effects, advanced color controls, and intuitive layer editing.



## **Flexible Plans**

Choose cost effective and flexible annual and monthly plans.



## **Always Up-to-Date**

Be the first to get all new photo editing features and tools.



## **New Design Packs Added Monthly**

Get unlimited access to all express layer templates, AI style effect packs, frames and clip art.



## **Music & Sound FX Tracks**

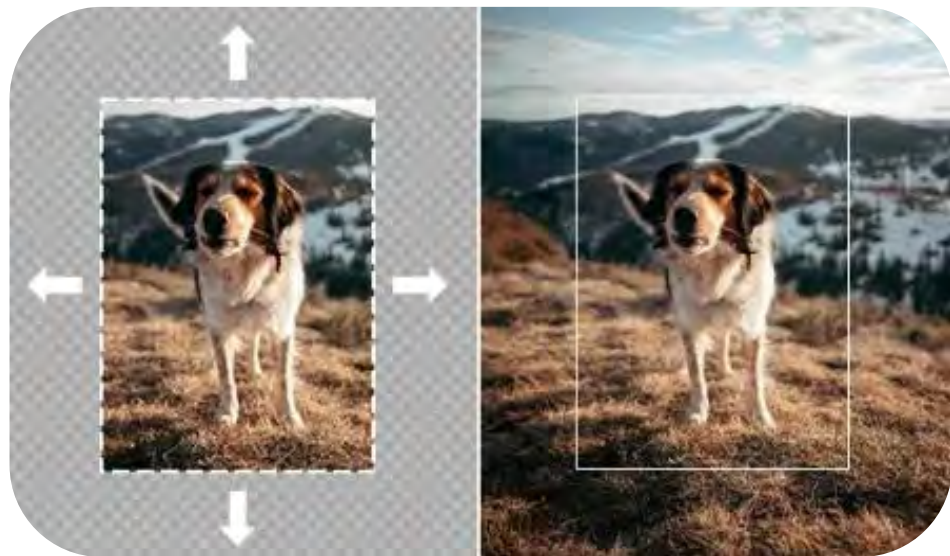
Create unique photo slideshows with 100+ background music tracks; new added monthly!







# Feature Introduction



Expand your image in any direction with AI generated content that seamlessly blends with the original image



Look your best with the perfect combination of photo retouching edits instantly applied in a single click.



Unblur faces in photos and maintain background blur to create a natural focal point in close-range shots, such as portraits.





Seamlessly swap any face to any photo. Swap faces with friends, family, celebrities, even famous artwork. Create fun, shareable photos across your social media.



Eliminate unwanted objects and people from photos leaving no trace they were ever there.



Remove backgrounds and edit your own, all at once. Edit background color, blur, or import images, including AI generated backgrounds.



Powerful AI technology automatically suppresses photos' grainy, pixelated noise while maintaining the details.

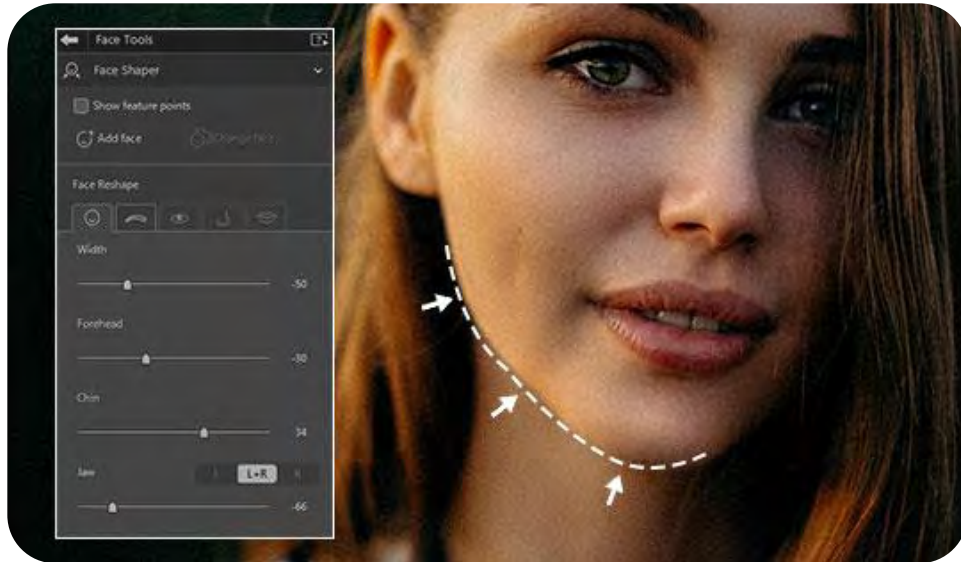




Precisely remove unwanted objects or people from images with this powerful but easy-to-use editing tool. No longer do you have to worry about crowds in scenic spots, photobombers or unfortunate environmental objects.



Add or subtract inches to your height by shortening or lengthening the body for a natural looking stature.



Virtually reshape and refine your face. Remove wrinkles and shine, or whiten teeth. Change the width of the face. Reduce or enhance forehead, jaw, and chin details with shaper tools.



Remodel your room. Create design ideas for clients with AI. Instant, professional results with time-investment kept to a minimum.





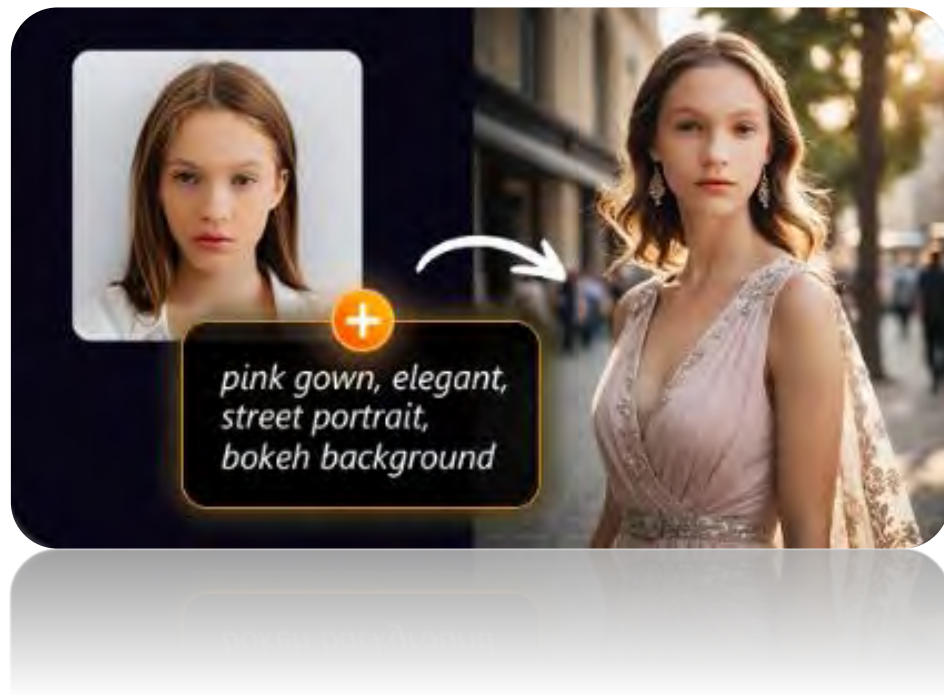
Generate images with subjects in a specific pose from a reference image. Great for enhanced realism, or continuity in batches of AI generated images.



Transform any image into descriptive words for engaging captions, alt text, hashtags, and prompt inspiration. Perfect for content creators, designers, or anyone needing text descriptions for their visual content.



Generate images that borrow aesthetic qualities from a reference image. Use text prompts to guide your images' specific direction and content.



Generate images that borrow aesthetic qualities from a reference image. Use text prompts to guide your images' specific direction and content.





Correct common imperfections like keystone, fisheye distortion, chromatic aberration, and vignetting.



Instantly transform text into captivating images or stickers. Powered by an advanced algorithm, that understands intricate descriptions, enable your imagination to create state-of-the-art AI art. Easily create concept art and never feel lost when searching for the perfect image.



Effortlessly restore facial features to pristine clarity. Regardless of whether you're upscaling vintage snapshots or simply looking to add an extra touch of detail, our innovative technology ensures that every facial feature is beautifully restored, or brought to life.



Completely transform body compositions with bust, waist, leg, arm and hip shaper tools. And facial portraits with nose, face, eyes, brow and skin tools. These tools help adjust proportions, slim down or tone certain areas, and improve overall symmetry to the face and body.



Enhance your portraits by automatically evening out skin tones, fading dark spots, and reducing or eliminating rough patches, dry blotches, and blemishes. Experience the natural reduction of wrinkles and fine lines, allowing your subjects' skin to radiate youthful vibrancy.





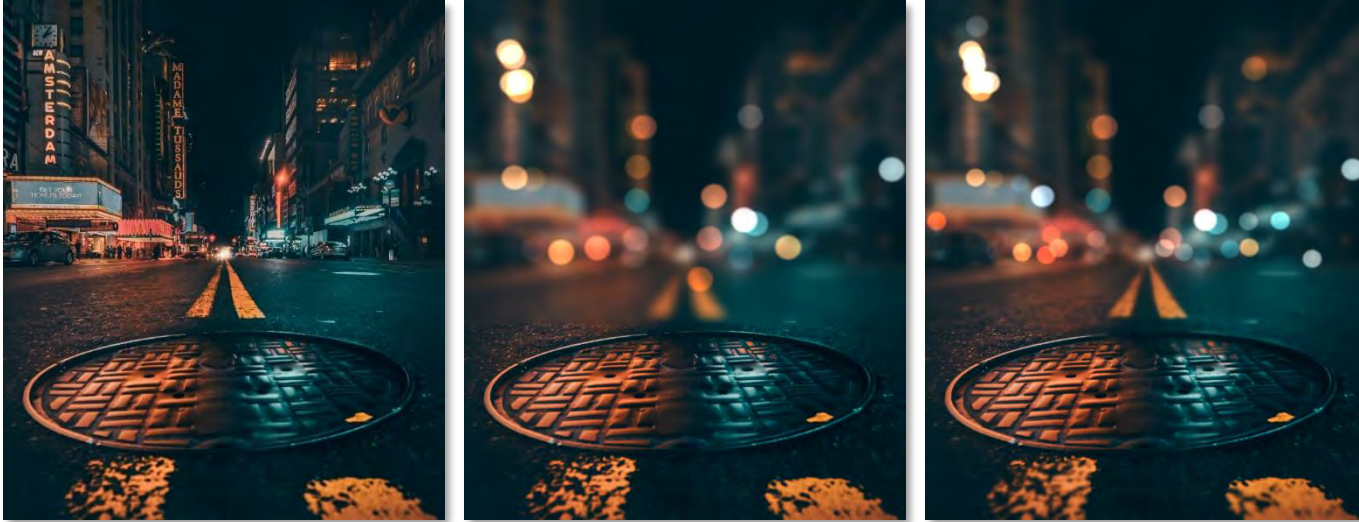
Take away any wrinkle from a portrait. You can choose to completely remove the wrinkle, or just make subtle natural alterations to your portraits.



Fix blurry images with smart precision tools. Perfect for moving shots, photography taken in motion, or high-intensity sports.



Transform the sky in your images with AI. Position, blend, and animate. The sky is the limit.



Create dreamy images with Bokeh, add natural glows, sparkles and intense bursts of light. Edit everything from size, color, and direction to truly shape your scene with wonderfully rich light.



Bring your photos to life by adding natural movement to your images





Create unique compositions by combining images, text, or graphics



Creative Blending Modes



Adjustment Layers



Bevel & Emboss Text Effects



Customizable Warped Text Layers



Group & Filter Layers



Snap Alignment in Layers



One-click Layer Alignment



One-click Layer Distribution



Our AI engine intelligently applies brushstrokes that make pictures look like they were designed and painted by an experienced artist.



Completely change the color of specific objects in a picture for a whole new look.



Give your images the perfect finishing touch with professionally designed frames & stickers in a range of styles.



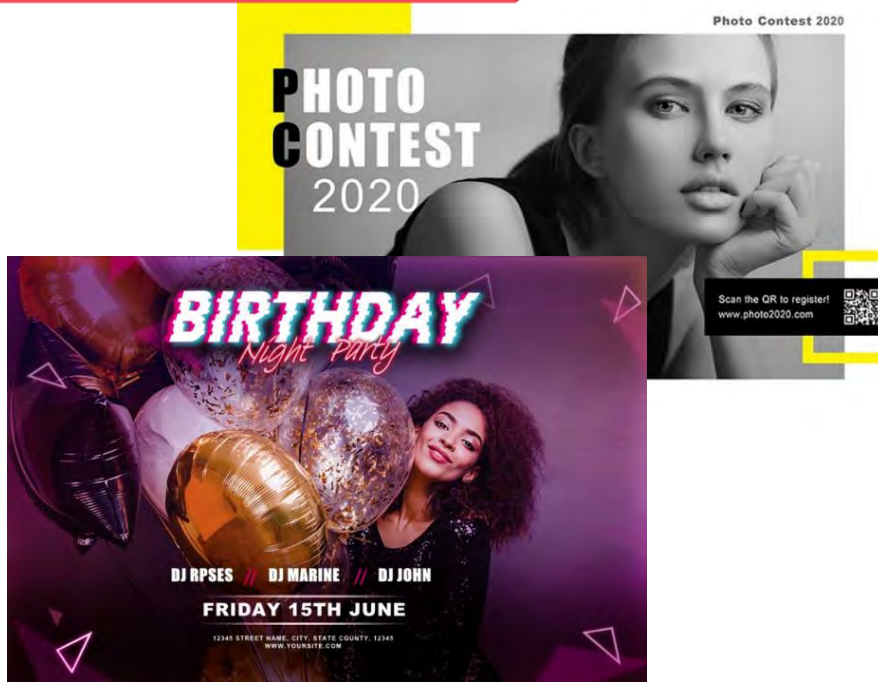
Instantly create complex multi-layer images to achieve distinctive styles.



A close-up portrait of a woman with long, wavy, dark hair adorned with a crown of pink and orange flowers. She has a soft, natural-looking complexion with rosy cheeks and is looking slightly to the right. The background is a soft-focus field of pink flowers under a clear blue sky. The overall aesthetic is soft, romantic, and ethereal.

# Plug-ins & Effects

NEW PACKS EVERY MONTH!



Get unlimited use of all express layer templates, AI style effect packs, frames, and clip art; with new releases every month!

NEW PACKS EVERY MONTH!



Enjoy professional sound effects and music tracks. Access the files directly from PhotoDirector's Slideshow creator.



# Appendix



## **Operating System**

Microsoft Windows 11, 10, 8/8.1, 7 (64 bit OS required)

## **Processor (CPU)**

Intel Core™ i-series or AMD Phenom® II and above

## **Graphics Processor (GPU)**

128 MB VGA VRAM or higher

## **Memory**

4GB required (For AI style transfer, 8GB or above recommended)

## **Hard Disk Space**

2GB

## **Internet Connection**

Internet connection also required for initial software & file formats activation.

## **Screen Resolution**

1024 x 768, 16-bit color or above



## **Photo (Import)**

- JPG ▪ TIFF ▪ RAW ▪ PNG ▪ PHI ▪ BMP ▪ HEIF ▪ GIF.
- PhotoDirector also supports the import of most camera RAW formats.

## **Photo (Export)**

- JPG ▪ TIFF ▪ PNG ▪ GIF ▪ PHI (Ultra only)

## **Video (Import)**

- AVI ▪ MOD ▪ DAT ▪ TOD ▪ VOB ▪ TPD ▪ VRO ▪ TRP ▪ FLV ▪ M4V ▪ MP4 ▪ M2V ▪ MPG ▪ MOV ▪ MPEG
- 3GP ▪ MPE ▪ 3G2 ▪ M2T ▪ 3GPP ▪ M2TS ▪ MKV ▪ MTS ▪ WMV ▪ TS ▪ ASF

## **Video (Export)**

- MPEG4 ▪ WMV

**Corporate:**

Ginger Liu at [press@cyberlink.com](mailto:press@cyberlink.com)

**CyberLink Japan:**

Hiroyuki Imazawa at [contact\\_pr\\_jpn@cyberlink.com](mailto:contact_pr_jpn@cyberlink.com)

**CyberLink USA:**

Melinda Ziemer at [contact\\_pr@cyberlink.com](mailto:contact_pr@cyberlink.com)

**Germany:**

Lara Gerhard at [contact\\_pr\\_deu@cyberlink.com](mailto:contact_pr_deu@cyberlink.com)

**France:**

Ginger Liu at [press@cyberlink.com](mailto:press@cyberlink.com)

**United Kingdom:**

Ginger Liu at [press@cyberlink.com](mailto:press@cyberlink.com)