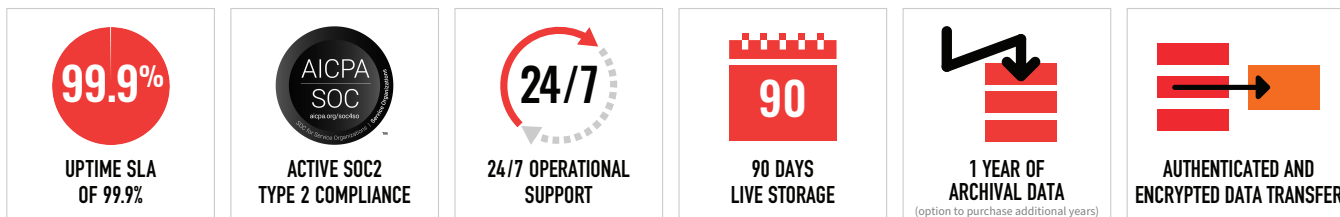


GRAYLOG CLOUD FACT SHEET



GRAYLOG CLOUD ISN'T A PRODUCT...IT'S AN EXPERIENCE

Our cloud-native solutions offer a powerful, flexible, and seamless experience without the added burden of infrastructure or operational costs. We are committed to keeping our secure, high availability cloud environment up to date with the latest product features so you can continue to use event log data to gain insight into the overall health of your IT infrastructure, systems, and applications, performance bottlenecks, unusual or suspicious activity, and potential cyber threats across your entire environment.

ACTIVE SOC 2 TYPE 2 FOR YOU

We understand that data security is one of your top priorities when considering cloud solutions. That's why we sought out and earned SOC 2 Type 2 certification to test and verify the design and upkeep of our security controls, and ensure that when we transmit, store, maintain, process, and dispose of your data, it is kept confidential at all times.

SLAS AND SUPPORT THAT GO ABOVE AND BEYOND

Enjoy the peace of mind that comes with the Graylog Cloud SLA. Our terms are stated clearly, like our commitment to 99.9% service uptime and 24/7 operational support, Graylog Cloud is designed to meet and exceed your workload requirements, establish clear and measurable guidelines, and adapt to your organization's evolving needs.

EVENT LOG STORAGE

A Graylog Cloud instance can provide centralized live storage of event log data for up to 90 days, aligning with PCI DSS log retention requirements. Once your event logs are centralized and stored, Graylog Operations and Graylog Security can automatically aggregate your log data, quickly correlate disparate pieces of information to piece together potential performance issues or cyber threats and provide you with actionable insight you can use to resolve errors faster.

EVENT LOG ARCHIVAL

The 1-year log archival capabilities of Graylog Cloud can help provide a glimpse into the state of your environment over a set period of time. Graylog Operations and Graylog Security can leverage archived log data to identify performance trends, audit security events, and pinpoint periods of high demand so you can make informed decisions.

REALIZE VALUE QUICKLY

Graylog Cloud capabilities allow you to focus your investment on day-to-day analysis activities, and not physical infrastructure. We'll get you up and running in a few days so you can access and analyze your log data from anywhere at any time. From there, Graylog Cloud makes it easy to scale up or down to meet the needs of your business.

Graylog Enterprise

Your Log Data is Talking. Are You Listening?



As modern IT environments continue to grow in size and complexity, visibility into cybersecurity issues is becoming more difficult as applications, systems, and devices across the network produce larger amounts of log data. Manual approaches to log collection, normalization, and analysis scale poorly, so organizations need a better way to collect and analyze large volumes of log data without creating a heavy burden on SecOps, IT, and DevSecOps professionals.

Enterprise Log Management and Analysis for Improved Visibility

Delivered to you in either a self-managed or cloud-native experience, Graylog Enterprise is a comprehensive log management and analysis solution that helps you centralize, search, and analyze event log data so resource-constrained organizations can identify security and performance issues faster, reduce downtime, and streamline operations.

Graylog Benefits

- Consolidate log data from across your into a centralized repository for analysis
- Scour volumes of data in seconds with lightning-fast search capabilities
- Focus performance efforts on what matters by filtering out alert noise
- Increase productivity with automation you can trust for repetitive tasks

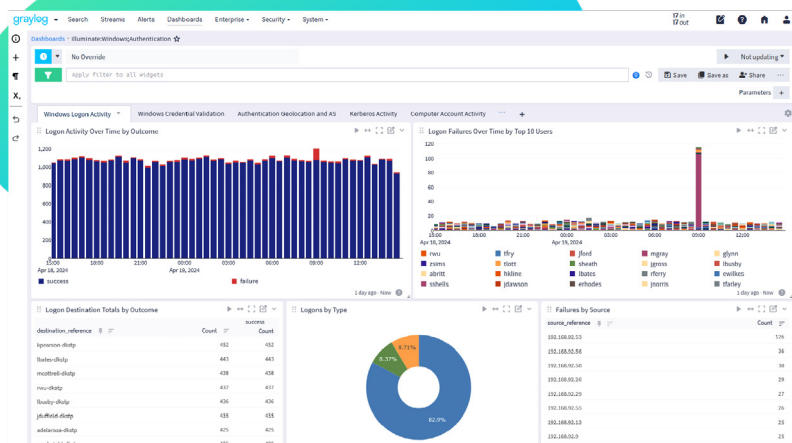
Graylog Enterprise at a Glance

Event Log Collection and Analysis for Improved Visibility

Your infrastructure, devices, and applications are generating volumes of log data that can give you insight into the health of your environment. All log data, including syslog, Windows®, or VMware® events, are crucial components of the complete picture of your environment, and can help with troubleshooting and threat detection. Graylog Enterprise can collect, normalize, and analyze log data so you can detect and find the root cause of security and performance issues faster.

Powerful Search and Filter Capabilities for Easier Troubleshooting

Log data comes at you fast, and locating the right piece of information can be like trying to find a needle in a haystack. Graylog Enterprise is designed to parse petabytes of data in seconds, allowing you to quickly find data in real-time and easily apply color coding to your log data to aid with filtering and identifying issues.



Bring Your Log Data to Life with Visualization Capabilities

Easily visualize your log data via an interactive stream to identify potential issues as they occur in real-time with Graylog Enterprise.

Identify Priority Events in a Sea of Alerts

Getting to the data you need quickly shouldn't be difficult. Graylog Enterprise makes it easy to filter out the noise so you can focus on the events that really matter, reducing alert fatigue and eliminating the need to go outside the platform for additional analysis.

Spring Into Action Quickly with Customizable Alerts and Notifications

Your users shouldn't discover problems before you do. The Graylog Enterprise intelligent alert engine allows you to customize alerts and delivery options, including email and Slack® notifications, and the ability to trigger an external script so you can start fixing issues before they impact business continuity.

Out-of-the-box Content Provides Value Quickly

Graylog Enterprise comes equipped with out-of-the-box content to help you streamline log data analysis. Start fast with content like pre-configured search templates, dashboards, correlated alerts, and more and get to the root cause of security issues faster.

POWERFUL, LIGHTNING-FAST FEATURES



ALERTS AND NOTIFICATIONS

Customize alerts and receive them via email, text, Slack®, and more.



ARCHIVING

Archive event logs for analysis and identify trends over time.



CORRELATION ENGINE

Automatically piece together information from different log data to identify potential issues.



FORWARDER

Easily send data to Graylog Cloud or to an on-premise Graylog Server installation.



ILLUMINATE CONTENT

Start fast with prebuilt parsers and dashboards leveraging the Graylog Schema.



INTEGRATE USING REST API

Easily share data with other business-critical systems for full transparency and collaboration.



INTERACTIVE DASHBOARDS

Combine widgets to build customized data displays and automate the delivery of reports to your inbox.



LOG VIEW

Visualize data in real-time as events occur, ensure continued availability, streamline investigations.



SCHEDULED REPORTS

Leverage Graylog's dashboard functionality to easily build and configure scheduled reports.



SEARCH TEMPLATES

Save and share parameterized searches and dashboards.



SEARCH WORKFLOW

Build and combine multiple queries into one action.



TEAMS MANAGEMENT

Control entity access and capabilities. Includes LDAP/Active Directory integration.

Ask Our Experts and See Graylog Enterprise in Action

Don't just take our word for it. At Graylog, we believe you should have a chance to get all your questions answered before you buy. That's why we offer scheduled product demos that demonstrate full product functionality and dedicated time for Q&A. Simply see how easy it is to seamlessly collect, normalize, and take control of your log data to identify performance issues.



Graylog Enterprise isn't just a CLM solution; it's your IT ecosystem's best friend. Join the log management revolution today.



ABOUT GRAYLOG

Graylog is a leader in log management and Security Information Event Management (SIEM), making the world and its data more efficient and secure. Built by practitioners with the practitioner in mind, Graylog unlocks answers from data for thousands of IT and security professionals who solve security, compliance, operational, and DevOps issues every day. Deployed in more than 50,000 installations worldwide, Graylog is an award-winning platform built for speed and scale in capturing, storing, and enabling real-time analysis of terabytes of machine data. Graylog eliminates the noise and delivers an exceptional user experience by making data analysis, threat hunting, detection, and incident investigation fast and efficient using a more cost-effective and flexible architecture.

www.graylog.org

info@graylog.com | 1301 Fannin Street, Suite 2000, Houston, TX 77002

©2024 Graylog, Inc. All rights reserved.

