

Riverbed Packet Analyzer Plus

High-speed packet analysis software that works with Riverbed AppResponse or Riverbed Transaction Analyzer to diagnose problems fast

The Business Challenge

Having the right tool to continuously analyze terabytes of packet data traversing your enterprise network, and to quickly make sense of them is a critical step in network monitoring and troubleshooting. But you don't want to transfer these large packet files across the network, and risk slowing down other important transactions and applications.

Instead, analyze the data where it is stored locally using special indexing that can help you drill down quickly to isolate a problem without wasting time. Having such a tool can streamline the process of diagnosing complex network issues in minutes, not hours or days.

Riverbed Packet Analyzer Plus

Riverbed® Packet Analyzer Plus is a packet analysis and reporting solution that works with Riverbed® AppResponse network-based application performance management. It has an intuitive graphical user interface that streamlines packet analysis.

Simply drag and drop preconfigured "Views" onto a group of virtual interfaces (VIFGs) or a packet trace file, and see the results immediately.

By rapidly isolating the specific packets needed to diagnose and troubleshoot complex performance issues, you can quickly analyze multi-terabyte packet recordings on remote AppResponse appliances, a AppResponse Virtual Editions, or AppResponse Cloud without having to transfer large packet captures files across the network or cloud. Packet Analyzer Plus also fully, and seamlessly integrates with:

- Wireshark®, the leading open source protocol analyzer, for deep packet analysis and decoding.
- Transaction Analyzer, to facilitate the flow of network traffic data between the two products and streamline transaction troubleshooting help identify issues when millions of packets need to be analyzed. Then seamlessly analyze a particular transaction of interest via a simple right-click drill down from Packet Analyzer to Transaction Analyzer.

These workflows allow you to get to the right level of detail needed to diagnose root cause of end-user, and transaction problems quickly and easily.

Key Benefits

- Speed and simplify problem identification using packet analysis
- Eliminate the need to transfer large trace files over the network
- Streamline diagnosis of remote problems without on-site assistance

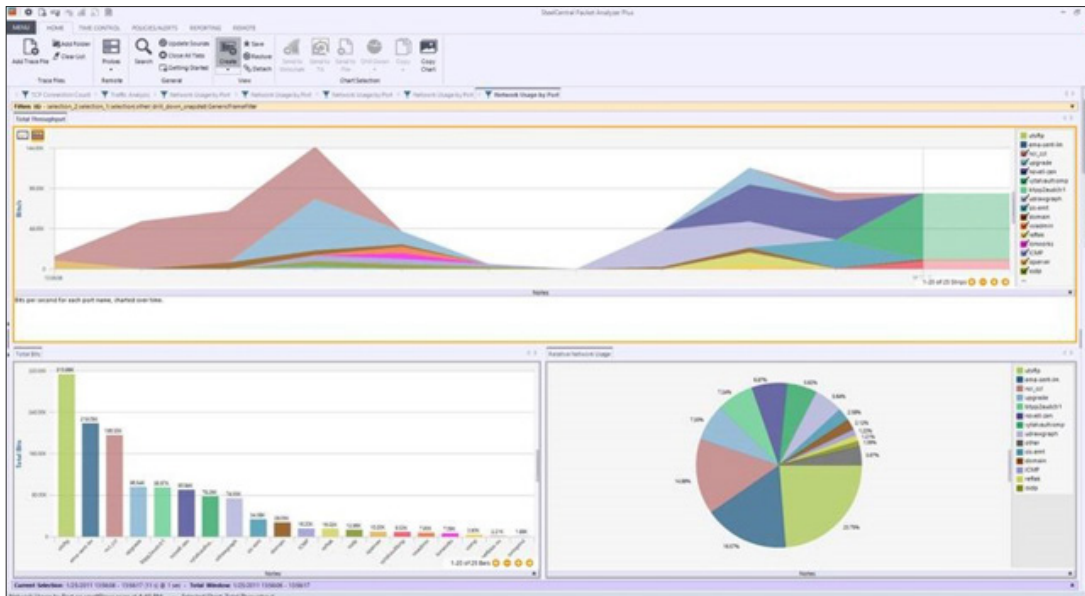


Figure 1

This is an example of a series of "views" that have been dropped on a local trace file or packets on a Riverbed AppResponse and the resulting analysis in Riverbed Packet Analyzer Plus. Because of the smart indexing that occurs at the time the packets are captured, the analysis happens almost instantaneously.

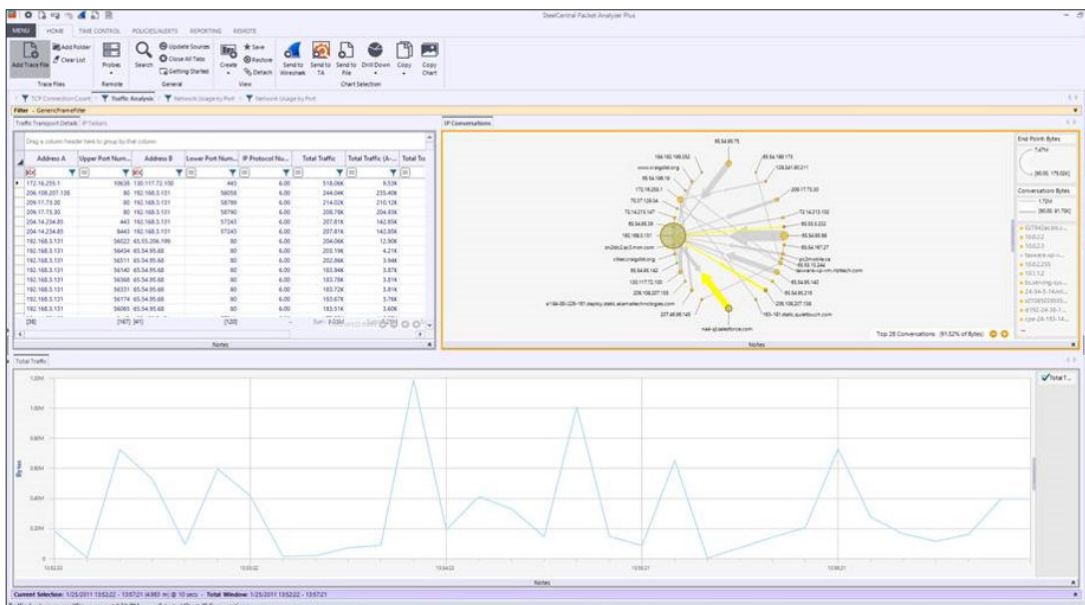


Figure 2

The conversation ring shows traffic between two nodes and displays it as a bidirectional stream; users can select either direction or both for analysis.

Key Features

Drilldown for in-depth analysis

- Easily isolate traffic of interest using drag-and drop multi-level drilldown and an extensive collection of network analysis views
- Display the details of any chart selection and quickly hone in on specific packets to isolate anomalous network behavior
- Microbursts can saturate a gigabit network and cause significant damage. Zoom into a 100 microsecond view of the network and identify these utilization spikes or "microbursts".

Time control

- Easily move through view metrics over extended periods of time with just a few mouse clicks using "back-in-time" functionality
- Enhance visual presentation with sub-sampling and data aggregation techniques

Automation

- Create triggers and alerts on virtually any view metric, such as high bandwidth, slow server response time, and high TCP round-trip time
- Actions executed include event logging, sending an email alert, and packet capture

Reporting

- Create professional reports directly from screen views in a variety of formats including PDF, Word, and Excel

Broad selection of views

- With an extensive number of network analysis views you'll easily drill down and discover the root cause of any issue
- Views include: LAN and network, bandwidth usage, talkers and conversations, performance and errors, user activity, and more
- Conversation ring traffic between two nodes is displayed as a bidirectional stream; users can select either direction or both of them
- Enhanced view search with autofill

Broad protocol and transaction-level analysis

- Deep transaction-level analysis of HTTPS, DNS, VoIP, FIX, CIFS, MSSQL, GTP, and MySQL transactions as well as VDI monitoring of VMware View (PCoIP), Citrix XenDesktop (ICA) and XenApp (ICA)
- Financial protocols: LSE ITCH, PITCH (Chi-X, BATS), ASX, Euronext Optiq, HKEX, OSE, SGX, and Aquis
- Multi-segment and sequence diagram analysis are also standard

Multi-terabyte recordings

- Quickly and accurately isolate time intervals (trace clips) within a recording and perform in-depth analysis, and metric visualization on terabyte-size traffic recordings with a simple drag-and drop
- Create and manage multiple capture jobs with Packet Analyzer Plus to be run on a Riverbed AppResponse appliances, each capable of sustained multi-gigabit per second line-rate recording without packet drops
- Conveniently represents every packet recording as one simple data item even if it's multiple terabytes in size. Merge and analyze multiple trace files at once to reveal network behavior and make it easier to pinpoint where problems are happening on the network

Dynamic visualization

- Present information accurately with a complete collection of interactive charts
- Customize views or build new ones with the View Editor

Wireshark integration

- Use Riverbed Packet Analyzer as a "searchlight" to help you identify issues buried within millions of packets. Once identified, you can choose to send the selected traffic to Wireshark directly for deeper individual packet inspection and decoding
- Take advantage of Wireshark capture and display filters and expansive dissector library for deep packet analysis through the "Send to Wireshark" button
- Supports both pcap and pcap-ng files (default format) for Wireshark nanosecond granularity

Remote management and control

- Configure remote Riverbed AppResponse appliances for easy to manage branch office troubleshooting without having to send remote technicians offsite or to deploy additional hardware
- Packet Analyzer Plus uses the ViFG concept defined in AppResponse. ViFGs can monitor physical or VLAN interfaces
- Role-based access controls for remote capture files; users are now able to share a remote capture file with all the users belonging to the same role

Integrations

- Packet Analyzer Plus can send incident tickets to ServiceNow for central management
- Syslog alerts can be sent to any remote syslog

Integration with Riverbed Products

Riverbed Packet Analyzer Plus is integrated with all variations of Riverbed AppResponse for easier, more efficient packet analysis. It also streamlines the transfer of packets between AppResponse and Riverbed Transaction Analyzer. Use Riverbed Packet Analyzer Plus as a searchlight to help you identify issues when millions of packets need to be analyzed. Then seamlessly analyze a particular transaction of interest via a simple right-click drill down from Packet Analyzer Plus to Transaction Analyzer.

Learn more

For more information about Riverbed Packet Analyzer Plus specifications, please visit riverbed.com/products.



Riverbed – Empower the Experience

Riverbed is the only company with the collective richness of telemetry from network to app to end user that illuminates and then accelerates every interaction so that users get the flawless digital experience they expect across the entire digital ecosystem. Riverbed offers two industry-leading solution areas – Alluvio by Riverbed, an innovative and differentiated Unified Observability portfolio that unifies data, insights, and actions across IT, so customers can deliver seamless digital experiences; and Riverbed Acceleration, providing fast, agile, secure acceleration of any app over any network to users, whether mobile, remote, or on-prem. Together with our thousands of partners, and market-leading customers across the world, we empower every click, every digital experience. Learn more at riverbed.com/unified-observability.