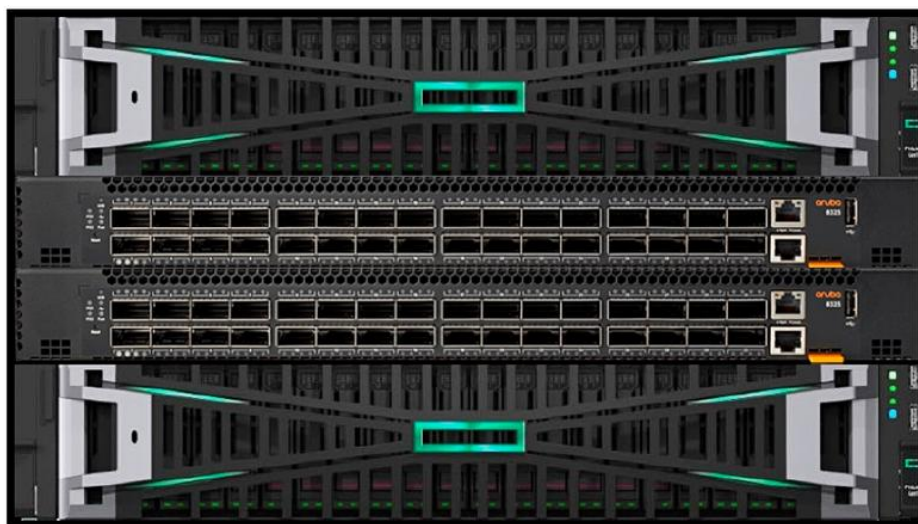


HPE GreenLake for File Storage MP



What's new

- Performance-oriented, petabyte-scale unstructured data lakes
- Ultra-efficient all-NVME with inline similarity data reduction (de-duplication and compression) even for previously compacted data
- Acceleration of Artificial Intelligence (AI), Machine Learning (ML) and Deep Learning (DL) training and inferencing in conjunction with the consolidation of other workloads
- End-to-end HPE GreenLake experience for unstructured data management

Overview

Are you looking for a unique modular storage platform for the next decade of machine intelligence? Do you want to accelerate your data-first modernization from edge to cloud to eliminate complex management, infrastructure silos, inefficient scaling, and low productivity?

HPE GreenLake for File Storage offers enterprise performance at scale to accelerate the most data-intensive applications with a resilient architecture designed to scale to exabyte capacities; a simpler, intuitive cloud operational experience with radically simple file data management and rich data services; enhanced productivity of data scientists and line of business application owners with faster time to insights and more value from all your data with a simple setup and a global

namespace for collaboration for competitive advantage.

Features

Accelerate with Enterprise Performance at Scale

HPE GreenLake for File Storage delivers enterprise performance at scale for the most demanding data-intensive applications using disaggregated-shared-everything (DASE) architecture.

The architecture is designed to scale to exabytes and offers independent scaling of performance and capacity.

With 80x faster performance[1] than legacy NAS, HPE GreenLake for File Storage delivers high performance for all of your file data without tiering.

It provides 99.9999% availability [2] and is completely fault tolerant with systems providing more resiliency than direct-attached approach to storage and capable of withstanding rack failure for superior protection at scale.

Simplify with an Intuitive Cloud Experience

HPE GreenLake for File Storage provides radically simple file data management that is cloud-resident and delivers rich data services including file share vending, lifecycle management, hybrid cloud backup, and disaster recovery, all via HPE GreenLake Cloud Platform.

Configured systems are automatically discovered and on-boarded in minutes.

Instantly see usage, activity, and throughput at any level of the unified directory structure no matter how many files are in the file system. Identify problem areas and hot spots to optimize resource utilization.

Leverage real-time visibility to set quotas at user and/or capacity level with configurable alerts on quota breaches in real time.

Enhance Productivity with Faster Time to Insights

HPE GreenLake for File Storage provides a competitive advantage from faster time to insights that unlock more value from all your data.

Data scientists and business application owners can quickly set up and run their applications, collaborate with a single global namespace, and complete their work more quickly.

In addition to enhanced resource productivity, the superior file data infrastructure provides a high ROI from capital investments.

With HPE GreenLake for File Storage, customers can advance data-first modernization to accelerate applications with enterprise performance at scale [3], simplify file data management with an intuitive cloud experience, and enhance productivity with faster time to insights.



Technical specifications

HPE GreenLake for File Storage MP

Drive description	7.68/15.36 TB NVMe SFF SSD
Capacity	154 TB to 15PB Raw Capacity Options 220 TB to 13PB Usable Capacity Max Effective Capacity 40+PB
Host interface	10/25/40/100 Gb Ethernet
Storage controller	HPE Alletra Storage MP Controller
Maximum drives per enclosure	20
Cache	N/A
Availability features	99.9999% availability Redundant power and cooling modules with battery and fans
Compatible operating systems	Microsoft Windows Server; Microsoft Windows Hyper-V; SUSE Linux Enterprise Server (SLES); Red Hat Enterprise Linux (RHEL); VMware ESX and ESXi
Warranty	3/0/0 (3-years parts-only) 5/0/0 (for SSDs)

[1] 80x faster performance: hpe.com/psnow/doc/a00058506enw

[2] 99.9999% availability: hpe.com/psnow/doc/a00058506enw

[3] Enterprise performance at scale: hpe.com/psnow/doc/a00058506enw



For additional technical information, available models and options, please reference the [QuickSpecs](#)

HPE Services

No matter where you are in your transformation journey, you can count on HPE Services to deliver the expertise you need when, where and how you need it. From strategy and planning to deployment, ongoing operations and beyond, our experts can help you realize your digital ambitions.

Consulting services

Experts can help you map out your path to hybrid cloud and optimize your operations.

Managed services

HPE runs your IT operations, giving you unified control, so can focus on innovation.

Operational services

Optimize your entire IT environment and drive innovation. Manage day-to-day IT operational tasks while freeing up valuable time and resources.

- HPE Complete Care Service: a modular service designed to help optimize your entire IT environment and achieve agreed upon IT outcomes and business goals. All delivered by an assigned team of HPE experts.
- HPE Tech Care Service: the operational service experience for HPE products. The service provides access to product specific experts, an AI driven digital experience, and general technical guidance to help reduce risk and search for ways to do things better.

Lifecycle Services

Address your specific IT deployment project needs with tailored project management and deployment services.

HPE Education Services

Training and certification designed for IT and business professionals across all industries. Create learning paths to expand proficiency in a specific subject. Schedule training in a way that works best for your business with flexible continuous learning options.

The [Defective Media Retention \(DMR\)](#) service feature option applies only to Disk or eligible SSD/Flash Drives replaced by Hewlett Packard Enterprise due to malfunction. [Comprehensive Defective Material Retention \(CDMR\)](#) allows you to keep all data retentive components.

HPE GreenLake

[HPE GreenLake edge-to-cloud platform](#) is HPE's market-leading as-a-Service offering that brings the cloud experience to apps and data everywhere – data centers, multi-clouds, and edges – with one unified operating model, on premises, fully managed in a pay per use model.

If you are looking for more services, like **IT financing solutions**, please explore them [here](#).

Make the right purchase decision.
Contact our presales specialists.

[Find a partner](#)



Chat now (sales)



Call now



Buy now



Share now



Get updates

Explore **HPE GreenLake**




**Hewlett Packard
Enterprise**

© Copyright 2023 Hewlett Packard Enterprise Development LP. The information contained herein is subject to change without notice. The only warranties for Hewlett Packard Enterprise products and services are set forth in the express warranty statements accompanying such products and services. Nothing herein should be construed as constituting an additional warranty. Hewlett Packard Enterprise shall not be liable for technical or editorial errors or omissions contained herein.

Parts and Materials: HPE will provide HPE-supported replacement parts and materials required to maintain the covered hardware.

Parts and components that have reached their maximum supported lifetime and/or the maximum usage limitations as set forth in the manufacturer's operating manual, product quick-specs, or the technical product data sheet will not be provided, repaired, or replaced as part of these services.

Image may differ from the actual product
[PSN1014727466TWEN](#), November, 2023.