

**nanoCAD**

# Topoplan Module

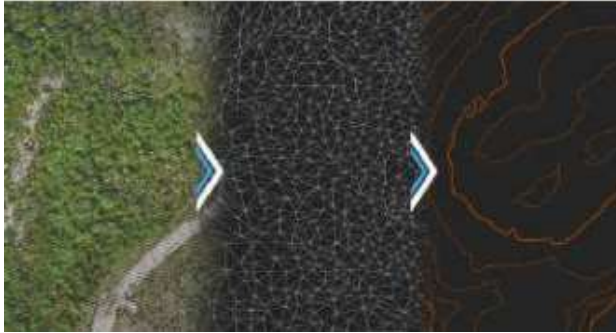
nanoCAD Topoplan模組透過數位地形建模和文檔記錄工具延伸nanoCAD platform。

主要在提高測量員的工作效率。

## New in Topoplan Module

- ✓ Recalculation of coordinates
- ✓ Mesh simplification
- ✓ 3D slope
- ✓ 3D polyline offset
- ✓ Surface Difference
- ✓ Coloring Elevation Legend
- ✓ Creating Geopoints Manually
- ✓ Creating a Group of Geopoints Manually
- ✓ Editing, Renaming and Deleting a Group
- ✓ New Grips of Geopoints
- ✓ Creating Geopoints by Points and Texts
- ✓ Export Geopoints
- ✓ Points Conversion
- ✓ Creating Label and Marker Styles of Geopoints
- ✓ User-Defined Properties of Geopoints

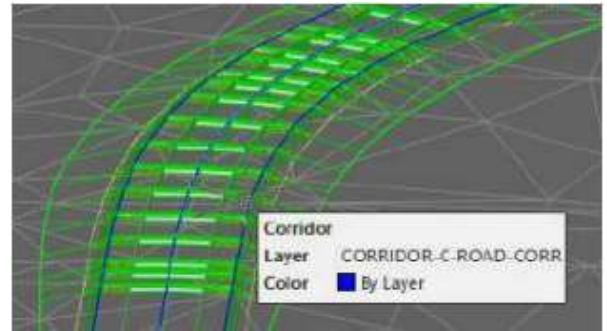
## 模組特點



### 高級曲面創建

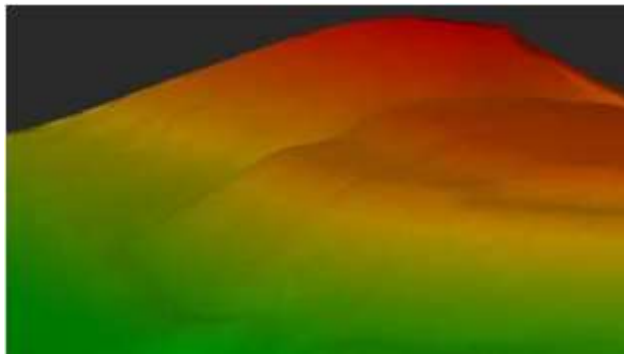
拓撲圖模組通過多種方法創建曲面：

- 按點創建 TIN(Create TINs by points)
- 將雲分解為點(Explode clouds into points)
- 導入高程格網(Import elevation grids)
- 將模型轉換為3D面、子網格和多邊形面網格 (Convert models to 3D faces, submeshes, and polyface meshes)



### 支援民用3D物件

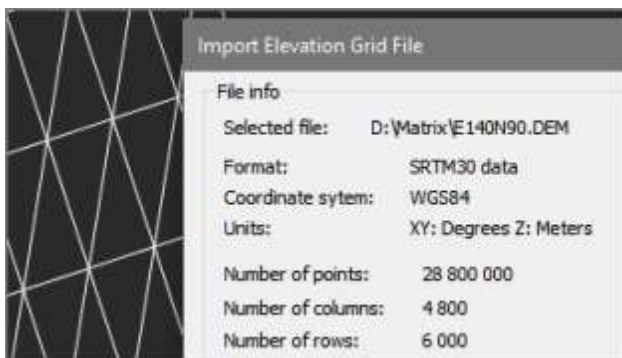
地形圖模組現在支持顯示民用 3D 中的物件。它們不再顯示為代理圖形。「屬性」面板可編輯屬性及顯示樣式。



### 應用於網格的紋理和執行的計算

拓撲圖模組在曲面上應用紋理：

- 平面紋理疊加將紋理應用於點雲中的表面(Flat Texture Overlay applies textures to surfaces from point clouds)
- 柵格紋理映射將影像圖像作為紋理應用於曲面上(Raster texture mapping applies raster images as textures on surfaces)
- 按高度劃分的網格著色根據表面的高程對表面進行著色 (Mesh coloring by height colors surfaces according to their elevation)
- 計算模型之間的體積可計算表面體積 - 總體積、差體積和平衡體積，用於挖掘工程(Calculating volumes between models calculates volumes of surfaces - total, difference, and balanced for excavation works)



### 用於創建數位地形模型的多個數據源

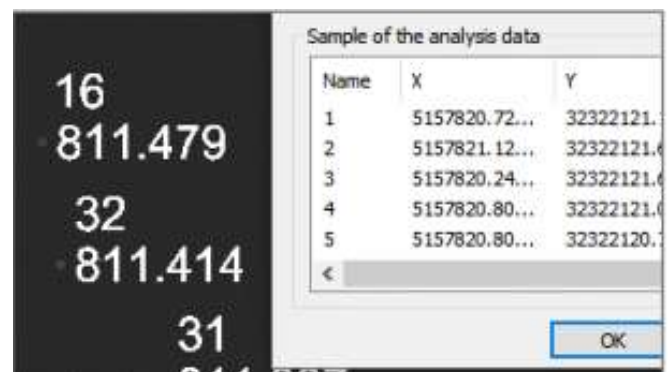
模組從多個數據源創建數位地形模型：

- 從文字檔匯入點(Importing points from text files)
- DEM匯入(DEM imports)
- 從先前匯入的點雲中卸載點 (Unloading points from previously imported point clouds)

### 匯入-匯出選項

拓撲圖模組提供以下匯入和匯出選項：

- 匯入地理點匯入XYZ和TXT格式的文字檔(Import geopoints imports text files in XYZ and TXT formats)

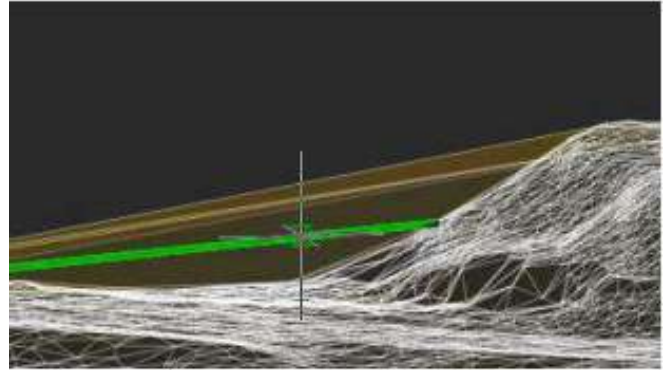


- 從LandXML匯入以LandXML格式匯入曲面·創建網格物件(**Import from LandXML imports surfaces in LandXML format, creating mesh objects**)
- 匯出到LandXML可將曲面(網格物件)匯出為LandXML格式·以便在其他應用程式中使用(**Export to LandXML exports surfaces (mesh objects) to the LandXML format for use in other applications**)
- 從GIS匯入從\*匯入折線和點物件.SHP和\*.MIF 檔(**Import from GIS imports polylines and point objects from \*.SHP and \*.MIF files**)
- 匯出到GIS會將折線和點對象匯出到\*.SHP和\*.MIF檔(**Export to GIS exports polylines and point objects to \*.SHP and \*.MIF files**)

## 表面和輪廓結構

拓撲圖模組具有用於處理曲面和構建輪廓的綜合工具：

- 翻轉和刪除邊緣(Flipping and deleting edges)
- 添加、移動、更改和刪除頂點(Adding, moving, changing, and deleting vertexes)
- 添加結構線(Adding structure lines)
- 通過網格邊界刪除具有特定長度邊緣的面(Removing faces with edges of a certain length through mesh boundaries)



## 大地表面的地形

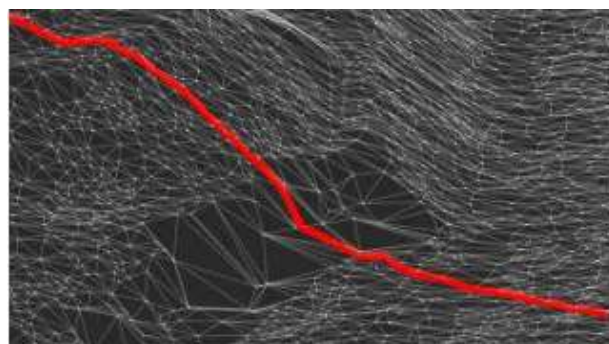
地形圖模組提供以下工具用於處理地貌圖元：

- 構建等高線(Constructing contours)
  - 輪廓線去除(Contour line removal)
  - 剖面線(剖面線)、等值線和標籤(Bergstriches (hatching), contour lines, and labels)
  - 構建型材線(Building profile lines)
- 在網格上生成3D折線物件(Generating 3D polyline objects on meshes)

## 其他曲面工具

拓撲圖模組具有用於處理曲面的附加工具：

- 切割網格(Cutting meshes)
- 網格的分類·將其劃分為類·例如將路面與草坪分開(Classification of meshes that divides them into classes, such as to separate road surfaces from lawns)



## 其他地形元素工具

地形圖模組具有以下用於處理地形的附加工具：

- 將線投影到網格上(Projecting lines onto meshes)
- 通過更改3D折線的高程(Z座標)來校正零高程(Correcting the elevation of zero by changing elevations (Z coordinates) of 3D polylines)



CSoft AS representative  
Expand Technology Co., Ltd.  
Tel: + 886 2 2357-8460  
Fax: + 886 2 2341-8506  
E mail: [CSoft@email.expand.com.tw](mailto:CSoft@email.expand.com.tw)