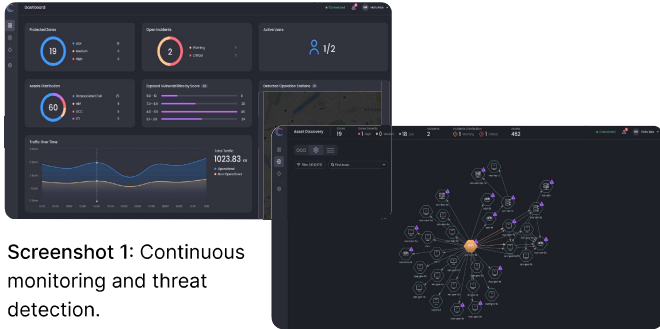


# The Definitive Cybersecurity Solution for Railways



Screenshot 1: Continuous monitoring and threat detection.

Screenshot 2: Automated asset discovery and in-depth network visibility.

Cervello's patented, cybersecurity solution presents rail organizations with a fully passive monitoring mechanism, nation-state grade threat detection and actionable remediation guidance. We provide railway operators and infrastructure managers with a contextual understanding of all network connectivities and operations while continuously monitoring mission-critical assets for vulnerabilities or threats.

## The Cervello Impact



### Prevents Disruption & Delays

Eliminates potential delays and service disruptions totaling hundreds of hours.



### Mitigates Thousands of Vulnerabilities

Automatically detects, prioritizes, and mitigates thousands of vulnerabilities throughout the network.



### Saves Millions of Dollars

Ensures regulation compliance and prevents unnecessary downtime costs.



### Identifies Hundreds of Inactive Assets

Discovers inactive assets according to responsibilities and connections.

## Providing Railways with the Visibility and Security They Need

### Cervello For Infrastructure Managers

A system that enables rapid detection, threat isolation, and actionable remediation guidance is integral to safeguarding the telecom, train management, and signaling systems that keep railway operations running smoothly. Cervello provides full visibility of all devices, the ability to identify and remediate threats at the earliest possible stage, and the tools to prevent operational disruptions.

### Cervello For Railway Operators

Railway operations rely on a multitude of signals that are transmitted across vulnerable communication channels. Cervello automatically verifies the authenticity of these signals and monitors for any deviation from standard conditions. It alerts railway operators with instant notifications when a deviation is detected and provides step-by-step resolution guidance.

### Cervello For OEMs

The modernization of mission-critical systems introduces crucial risks into systems that were originally designed to be operational for decades. Integrating cybersecurity-by-design into those systems minimizes such risks, prepares to exceed industry standards, and improves safety integrity levels.



# Designed to Meet the Unique Needs of the Industry

## Unrivalled Visibility

Cervello automatically maps out all of your OT assets and visualizes how they are connected to the rest of your networks, systems, and hardware, so you will gain the necessary context to quickly respond to any threat that arises.

## Seamless Integration

Seamlessly integrates into existing rail operational environments (including SIEM/SOC), security tools, and administrative systems.

## Intelligent Response

Delivers actionable remediation playbooks and guidelines for ideal threat isolation to enable quick resolutions and preserve business continuity.

## Flexible Deployment

With a flexible, vendor-agnostic approach and a passive, zero down-time deployment, Cervello delivers significant value within hours.

## Zero Trust Threat Detection

Cervello identifies misleading commands through a Zero Trust mechanism, without relying on prior data or pre-known, sensitive information.

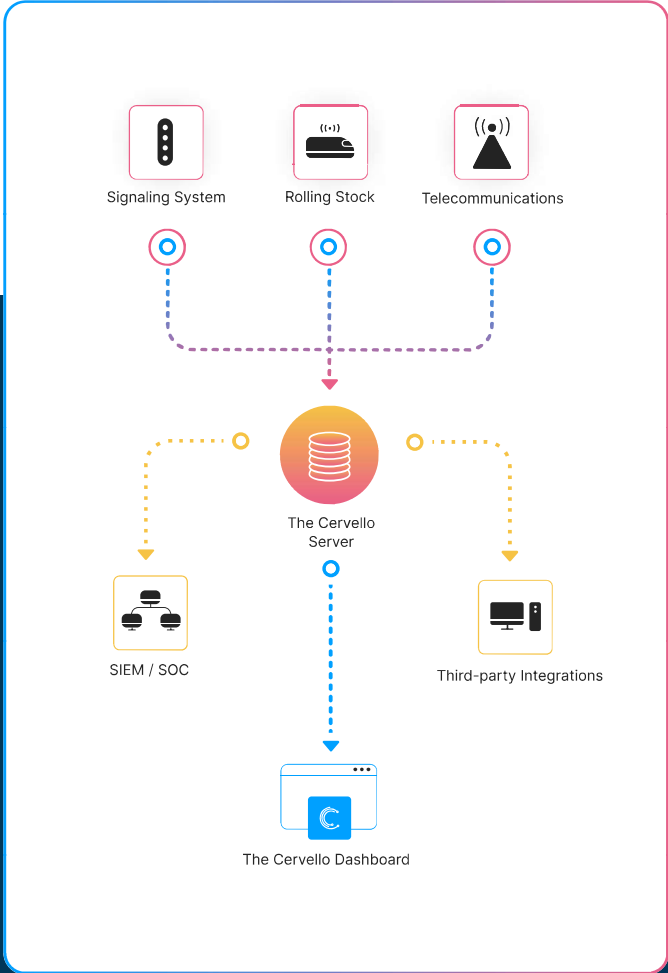
## Aligned with Railway Standards

Complies with railway safety regulations and security requirements.

## About Cervello

Cervello was built from the ground up by cybersecurity experts, railway veterans, and intelligence analysts with vast experience in defending national critical infrastructure from cyber threats.

Its unique and patented cybersecurity solution provides a complete contextual representation of the railway's operational activity and security posture, enabling railway teams to mitigate threats as they arise, avoid disruption, and operate with confidence. Railway organizations rely on Cervello's railway-centered cybersecurity solution to keep passengers safe, increase productivity, and maintain business continuity.



## Let's be in Touch



[cervello.security](https://cervello.security)



+972 77 408 0307



[info@cervello.security](mailto:info@cervello.security)



82 Yigal Alon Street, Suzuki Tower, Tel Aviv, Israel