

Infoblox Reporting and Analytics



"I'm excited by the power and flexibility Infoblox Reporting and Analytics can give me to dig into network data that was previously inaccessible. The new features can give us the freedom to make our own decisions on how to structure dashboards, rather than being limited to pre-defined reports, and we can get precise analytics on the efficiency, security, and future health of our network."

Simran Sandhu
Manager of Network Infrastructure
Adobe Systems

Infoblox Reporting and Analytics: Intelligence You Want, Data You Need

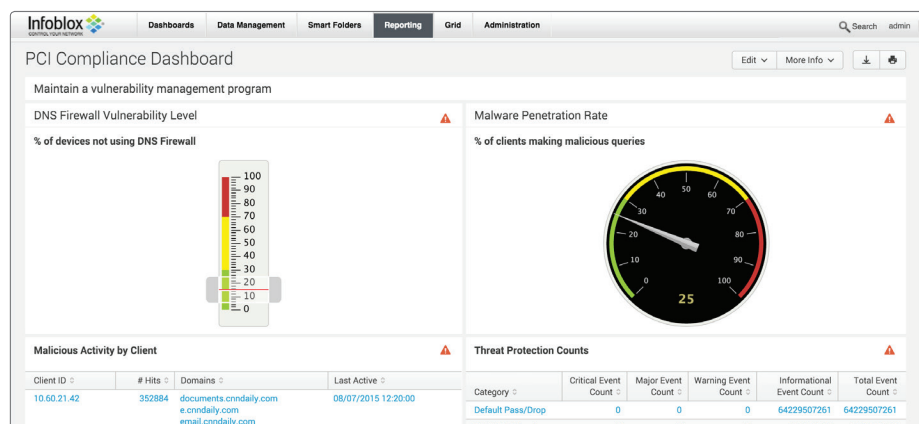
Infoblox network services contain valuable data about your network, clients, and applications. Infoblox Reporting and Analytics takes this data and turns it into actionable intelligence—enabling you to create custom dashboards and reports to troubleshoot network and application problems, uncover security threats, and address compliance requirements.

Infoblox Reporting and Analytics monitors your core network services to keep your applications running. You can quickly create custom security reports and dashboards to zero in on security issues, ensuring that your network is secure and available. You can easily meet audit requirements with pre-configured, customizable compliance reports—or quickly and easily create your own. To keep your Infoblox Grid™ running smoothly, you can track and project the utilization of the Grid and easily forecast when you will need to scale up.



The fully customizable Security Dashboard constantly checks the pulse of your Infoblox security infrastructure and helps you find and remediate problems quickly, keeping an accurate count of thwarted attempts against your network.

With role-based access control, your administrators have granular control over who can access the various reporting functions, and they can create an unlimited number of unique roles. Actions users take are logged to meet audit requirements.



With pre-configured, customizable compliance reports and the ability to quickly and easily create your own, you'll complete your next audit with less effort and greater success.

Infoblox Reporting and Analytics



Key Features	
Search	<ul style="list-style-type: none"> Flexible searching that enables you to use keywords, phrases, fields, Boolean expressions, and comparison expressions to specify exactly which events you want to retrieve The ability to easily turn search results into dashboard widgets or standalone reports
Reports and Dashboards	<ul style="list-style-type: none"> A comprehensive set of 80+ pre-configured reports Fully customizable reports and dashboards A wide variety of charts and visualizations to make data understandable and actionable The ability to export report data in XML and CSV formats New reports and dashboards—from the Infoblox Experts Community, Infoblox Professional Services, or engineering teams—that can be implemented in seconds, without NIOS upgrades
Alerts	<ul style="list-style-type: none"> Configurable alerts to separate the critical data from background noise and to know about problems fast Alerts to invoke third-party applications or send emails
Trends and Predictive Analytics	<ul style="list-style-type: none"> Trends and analytics for DNS, DHCP, IP address management, security, compliance, and application monitoring Predictive analytics that leverage historical data and growth trends to help predict the future and alert you of key issues

Reporting Appliances Specifications

Infoblox Reporting physical and virtual appliances offer a wide range of models that are designed to deliver the performance, capacity, and availability required for each unique environment. Cluster physical or virtual appliances for high availability, disaster recovery, and scalability (available in spring 2016).

Trinzic Reporting 800-2GB Appliance	
Network Interfaces	<ul style="list-style-type: none"> Two 10/100/1000 Base-T Ethernet (LAN ports) One 10/100/1000 Base-T Ethernet (HA port) One 10/100/1000 Base-T Ethernet (MGMT port)
Lights Out Management	<ul style="list-style-type: none"> One 10/100 Base-T Ethernet LOM port IPMI 2.0 compliant
Serial Port	DB-9 (9600/8n1, Xon/Xoff)
USB Ports	One USB 2.0/1.1 compliant (reserved for future use)
AC Power Supply	<ul style="list-style-type: none"> One internal PSU Input voltage: 100 – 240 VAC switchable 47 – 63 Hz Europe 208 – 265 VAC switchable 47 – 63 Hz
Disk and Fans	<ul style="list-style-type: none"> Three redundant fans One disk (fixed) System on flash

Trinzic Reporting 1400-5GB Appliance	
Network Interfaces	<ul style="list-style-type: none"> Two 10/100/1000 Base-T Ethernet (LAN ports) One 10/100/1000 Base-T Ethernet (HA port) One 10/100/1000 Base-T Ethernet (MGMT port) Optional: Four 1GE or 10GE SPF/SPF+ interfaces
Lights Out Management	<ul style="list-style-type: none"> One 10/100 Base-T Ethernet LOM port IPMI 2.0 compliant
Serial Port	DB-9 (9600/8n1, Xon/Xoff)
LCD Panel	Color LCD with navigation buttons
USB Ports	One USB 2.0/1.1 compliant (reserved for future use)
AC Power Supply	<ul style="list-style-type: none"> Two hot-swappable PSUs Input voltage: 100 – 240 VAC switchable, 50 – 60 Hz Output power: 450W
DC Power Supply	<ul style="list-style-type: none"> One hot-swappable PSU Optional second, redundant PSU Input voltage: -36 to 72DC

Infoblox Reporting and Analytics



Trinzic Reporting 2200-10GB Appliance

Network Interfaces	<ul style="list-style-type: none"> Two 10/100/1000 Base-T Ethernet (LAN ports) One 10/100/1000 Base-T Ethernet (HA port) One 10/100/1000 Base-T Ethernet (MGMT port) Optional: Four 1GE SFP or 1GE/10GE SFP+ interfaces
Lights Out Management	<ul style="list-style-type: none"> One 10/100 Base-T Ethernet LOM port IPMI 2.0 compliant
Serial Port	DB-9 (9600/8n1, Xon/Xoff)
LCD Panel	Color LCD with input buttons
USB Ports	Two USB 2.0/1.1 compliant (reserved for future use)
AC Power Supply	<ul style="list-style-type: none"> Two hot-swappable, redundant PSUs Input voltage: 100 – 240 VAC switchable, 47 – 63 Hz
Disk and Fans	<ul style="list-style-type: none"> Five hot-swappable, redundant fans Four hot-swappable, redundant disks RAID-10 System on flash

Trinzic Reporting 4000-20GB Appliance

Network Interfaces	<ul style="list-style-type: none"> Two 10/100/1000 Base-T Ethernet (LAN ports) One 10/100/1000 Base-T Ethernet (HA port) One 10/100/1000 Base-T Ethernet (MGMT port) Optional: Three 1GE SFP or 1GE/10GE SFP+ interfaces
Lights Out Management	<ul style="list-style-type: none"> One 10/100 Base-T Ethernet LOM port IPMI 2.0 compliant
Serial Port	DB-9 (9600/8n1, Xon/Xoff)
LCD Panel	Color LCD with input buttons
USB Ports	Six USB 2.0/1.1 compliant (reserved for future use)
AC Power Supply	<ul style="list-style-type: none"> Two hot-swappable, redundant PSUs Input voltage: 100 – 240 VAC, 50 – 60 Hz Output power: 750W
Disk and Fans	<ul style="list-style-type: none"> Four hot-swappable redundant fans Eight hot-swappable, redundant disks RAID-6

About Infoblox

Infoblox delivers critical network services that protect Domain Name System (DNS) infrastructure, automate cloud deployments, and increase the reliability of enterprise and service provider networks around the world. As the industry leader in DNS, DHCP, and IP address management, the category known as DDI, Infoblox (www.infoblox.com) reduces the risk and complexity of networking.

Infoblox Virtual Appliance Software for KVM



NIOS Virtual Model	KVM for Hypervisor	KVM for OpenStack	Supported as Grid Master
TE-V100	X	X	
TE-V800	X		
TR-V800	X	X	
TR-V805	X	X	
TE-V810	X	X	X
TE-V815	X	X	X
TE-V820	X	X	X
TE-V825	X	X	X
TR-V1405	X	X	
TE-V1415	X	X	X
TE-V1420	X	X	X
TE-V1425	X	X	X
TR-V2205	X	X	
TE-V2215	X	X	X
TE-V2200	X	X	X
TE-V2225	X	X	X
ND-V805	X	X	
ND-V1405	X	X	
ND-V2205	X	X	
CP-V800	X	X	
CP-V1400	X	X	
CP-V2200	X	X	

*NIOS for KVM is supported in the following environments: OpenStack, RHEL, SuSE Enterprise and Cloud, and CentOS.

Infoblox Product Warranty and Services

Infoblox delivers critical network services that protect Domain Name System (DNS) infrastructure, automate cloud deployments, and increase the reliability of enterprise and service provider networks around the world. As the industry leader in DNS, DHCP, and IP address management, the category known as DDI, Infoblox (www.infoblox.com) reduces the risk and complexity of networking.